 Address
Wuhan,Hubei,China

 Telephone
+86 13098839972

Whatsapp
+86 13098839972

 Email
sales@buvatech.com

 Website
www.buvatech.com

HUBEI BUVA Technology Co., Ltd.

Laer Cladding
Equipment

Laser-arc
Hybrid Welding

Laser Cutting
Machine

Laser Welding
Machine

Laer Cleanning
Machine

Laser Marking
Machine

Laser
Accessories

COMPANY PROFILE

Hubei BUVA Technology Co., Ltd, located in Wuhan, the Optics Valley of China, is a high-tech enterprise specialized in laser engineering equipment research, development, production, and sales.

The company is committed to providing customers with differentiated, customized, and cost-effective laser engineering application series equipments and overall solutions. We strive for excellence by focusing on the continuous development and innovation of laser engineering application products, including laser cutting, laser welding, laser cleaning, laser marking, and other series of equipment.

We have been dedicated to ensuring fast and timely services catering to each customer's unique needs. Currently, we have warehouses and technical service centers in Los Angeles, USA and Calgary, Canada and Ukraine. We will continue to expand our technical services globally in the near future.



CONTENT

ALL OUR PRODUCTS

Company Profile	1
Laser Cladding Equipment	2
Laser-arc Hybrid Welding	3
Laser Cutting Machine	4
Laser Welding Machine	5
Laser Cleaning Machine	6
Laser Marking Machine	7
Laser Accessories	8



Adress

Wuhan, Hubei, China



Call us

+86 13098839972

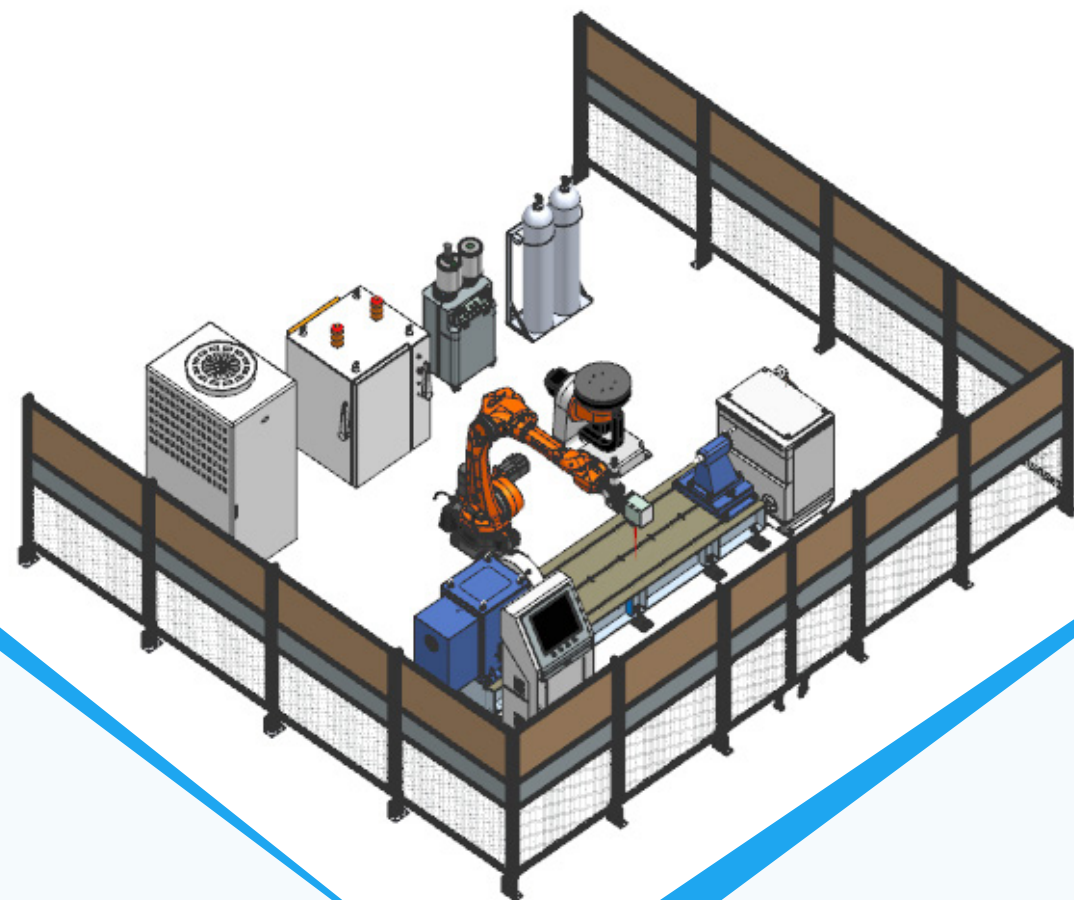


Email

sales@buvatech.com



Laser cladding equipment



PRODUCT DESCRIPTION

Laser cladding technology is a process that involves adding cladding materials to the surface of a substrate, using a high-energy-density laser beam to cause the cladding materials and a thin layer on the substrate surface to melt and solidify together, thereby forming an additive cladding layer with metallurgical bonding characteristics on the substrate surface, so as to achieve the improvement of the substrate surface performance.

Performance Requirements	Typical Occasions	Selection of Cladding Materials	Hardness
Anticorrosion, no requirement for wear resistance	Replacement of chrome plating	304/316/17-4	200-350HB
General anticorrosion, ordinary wear resistance	Replacement of hard chrome plating, e.g.: Laminar flow rolls, hydraulic rams, etc.	JG-8A	48-52HRC
		JG-11	53-57HRC
Corrosion resistance, heat resistance below 1000 ℃, general wear resistance	Boiler pipelines, marine systems where only anticorrosion is required, etc.	Incoloy alloys, e.g.: Inconel625	25-30HRC
High wear resistance, ultra - high anticorrosion, heat resistance above 600 ℃	Marine, power systems, new energy and other industries	Stellite alloys	28-50HRC

PRODUCT APPLICATION

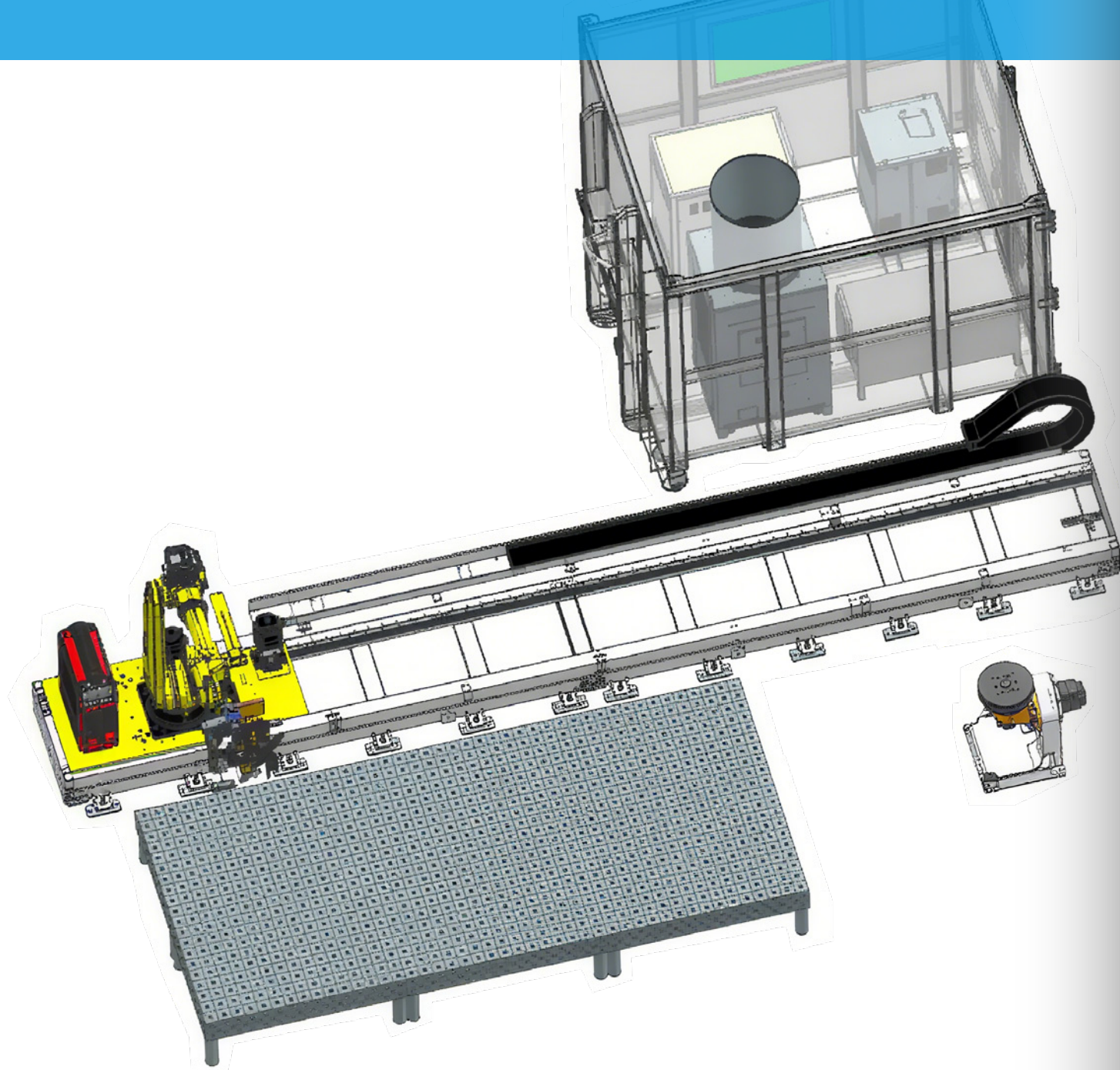
- 1 It can perform laser cladding processing on the outer circle, inner hole, plane and various complex curved surfaces of parts.
- 2 Undertake laser cladding processing business for various products such as plunger, roll, valve core, etc.
- 3 Serve customers in multiple fields, and the developed and produced equipment has functions such as laser quenching, cladding and alloying.



Laser-Arc Hybrid Welding

PRODUCT DESCRIPTION

Laser-arc hybrid welding is a process that physically couples a focused laser beam with an electric arc to form a hybrid heat source acting on the material surface, and realizes welding through the movement of the heat source. This technology couples two heat sources with very different physical characteristics and energy transfer mechanisms, exerts a synergistic effect, makes up for the welding defects of a single heat source, has advantages such as high efficiency, high quality, and energy saving, and has remarkable advantages in the welding field of medium and thick plates..



PRODUCT APPLICATION

- 1 Shipbuilding**
Deck and bulkhead large - scale structural parts are applied in batches. 10,000 - watt - class hybrid welding replaces traditional arc welding, with efficiency improved by more than 50%.
- 2 Engineering Machinery**
The demand for welding of steel structures such as box girders and U - ribs surges, promoting the upgrading of lightweight manufacturing in engineering
- 3 New Energy Vehicles**
Aluminum alloy body welding has become the mainstream direction, and hybrid welding solves the problem of thermal deformation in traditional processes.
- 4 Penetration in Emerging Fields**
Hybrid welding technology is being accelerated to be introduced into rail transit bogies, oil and gas pipelines, energy storage equipment, etc.



Constant temperature laser tin welding machine



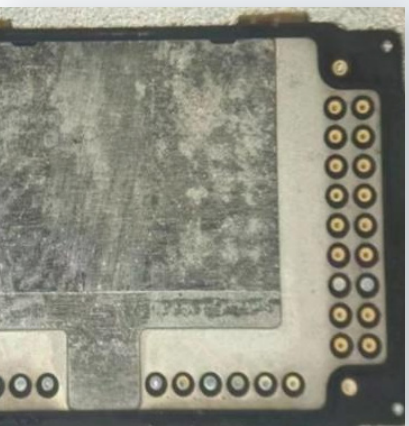
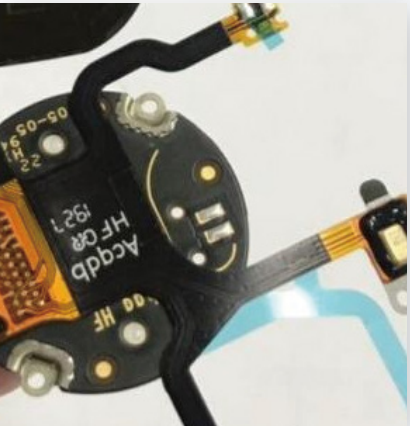
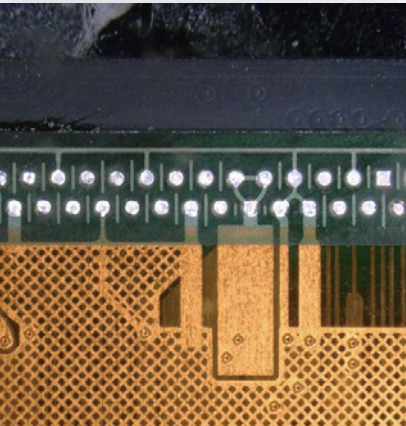
PRODUCT DESCRIPTION

The BVLS-200 is a constant-temperature FOB laser soldering system. Equipped with a customized laser module, it can fully replace BTB connectors through soldering, meeting the high-integration welding requirements of products. It is suitable for high-precision soldering applications such as FPC+PCB, FPC+FPC, FFC+PCB, FOG, and COG.

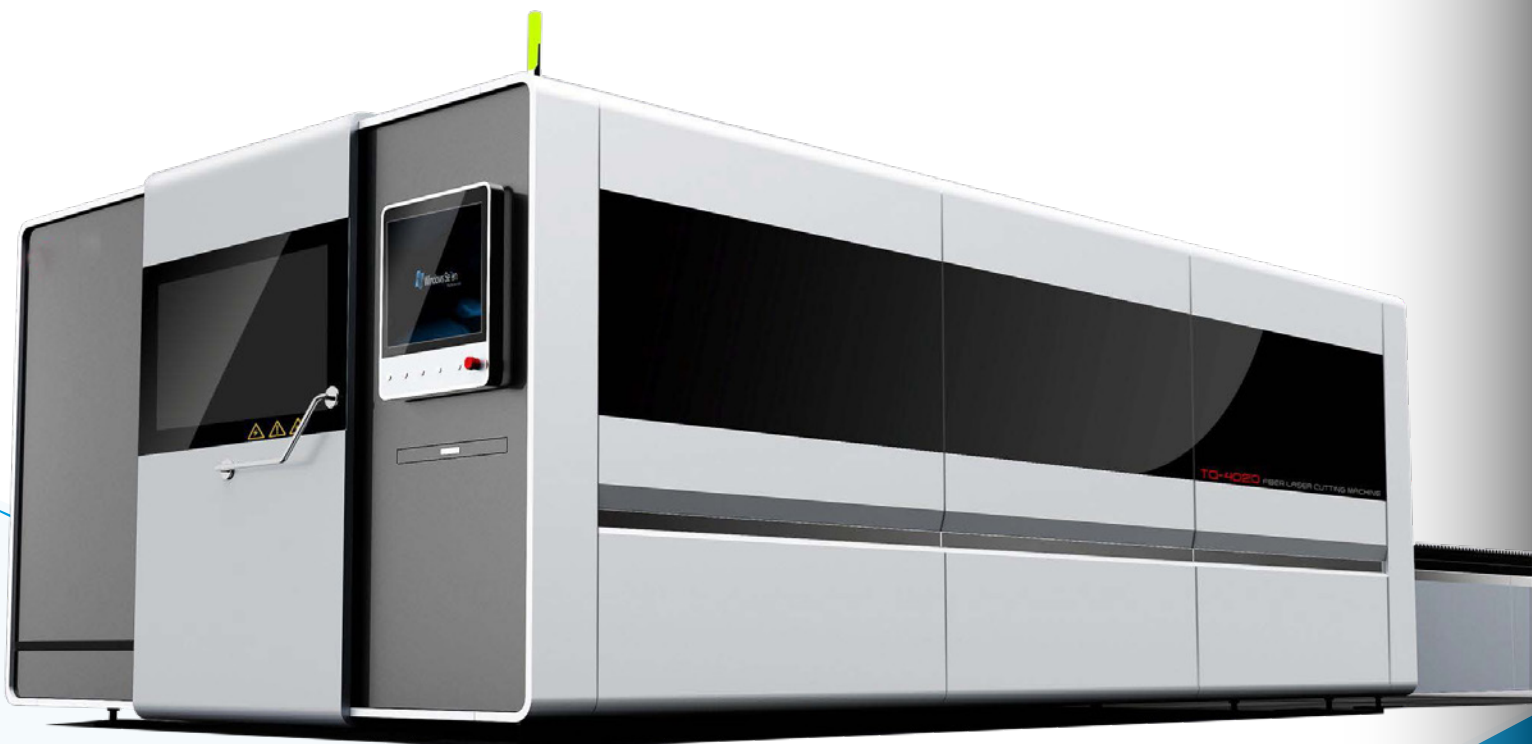
Model	0.2mm
Laser Power	200W
Positioning Method	CCD Coaxial Automatic Positioning
Control Mode	PC control, temperature feedback, pressure feedback, automatic alignment
Temperature Control Accuracy	±5°C
Repeat Motion Accuracy	±0.01mm
Power Supply	AC220V/50Hz45KW
Equipment Size	1400x1600x1700mm

PRODUCT APPLICATION

- 1 **Consumer electronics field :**
Daily electronic devices such as mobile phones, PCs, and TWS earphones.
- 2 **Smart wearables and new-type equipment field :**
Wearable devices, AR/VR glasses, antenna field, smart equipment such as smart watches and bracelets.machinery.
- 3 **Field of optical communication devices:**
FPC welding and processing of optical devices with multiple PIN pins and ultra-dense pitch products.



Interactive fiber laser cutting machine



PRODUCT DESCRIPTION

Exchangeable machine structure
(high efficiency exchange, complete tables exchange in 13 seconds)
Fully enclosed structure for metal processing
The overall appearance is generous and the structure design is reasonable
Adopt import configuration to guarantee high stability and reliability
High speed, high efficiency

Brand : BUVAuncom	Model : BV-3015CS-15KW
Laser power	1kw~15kw
Positioning accuracy	±0.03mm/m
Repeat positioning accuracy	±0.02mm
Maximum bearing capacity	800-4000KG (according to different laser power)
Operating temperature of machine	0°C-40°C
Other machine size options	3000x1500mm / 4000x1500mm / 6000x1500mm

PRODUCT APPLICATION

- 1

Industrial manufacturing category
Metal processing: Processing of metal materials such as carbon steel and stain-less steel to produce sheet metal parts and hardware accessories.
Automobile manufacturing: Cutting of automobile parts such as vehicle bodies, chassis, and engines.
- 2

Electronics and technology category
Electronics and electrical appliances: Cutting of PCB boards and metal casings of electronic components.
- 3

High-end equipment category
Medical devices: Processing of precision medical device components.
Aerospace: Cutting and manufacturing of aircraft components.

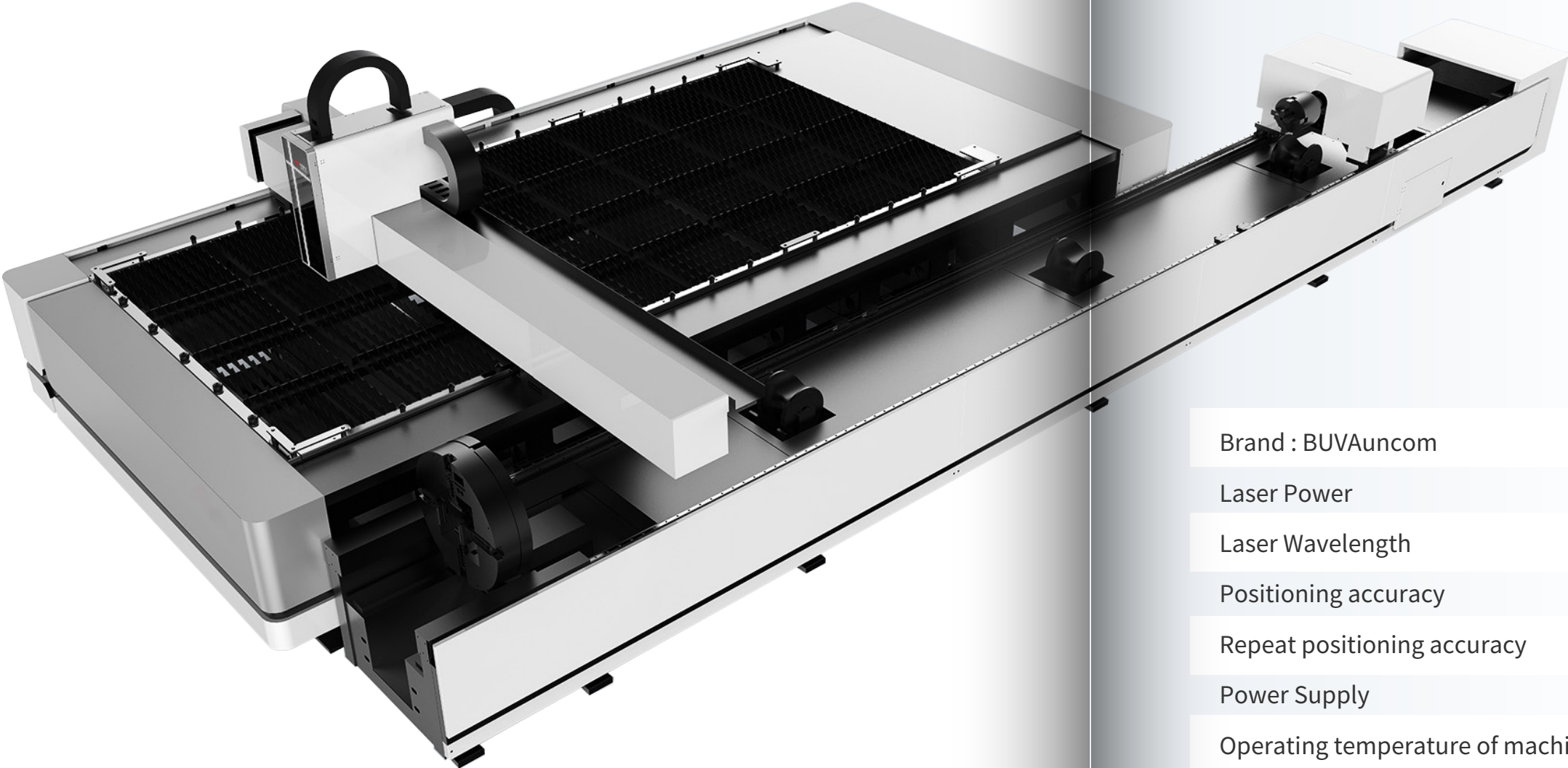
Tube-sheet Dual-purpose Fiber Laser Cutting Machine

PRODUCT DESCRIPTION

This professional fiber laser cutting machine for plates and pipes has comprehensive functions, which can significantly improve the processing efficiency and precision, and is suitable for a variety of complex processing scenarios. It has the functions of fast clamping and automatic centering, which greatly shortens the preparation time before processing, improves the overall processing efficiency, and ensures that every cutting is accurate.

PRODUCT APPLICATION

Cutting of intersecting holes on the main pipe, cutting of the intersecting line at the end of the branch pipe, cutting of the inclined end face of the circular pipe, cutting of the intersecting line between the circular main pipe and the branch pipe, cutting of square pipes and special-shaped holes, cutting of pipes with multiple materials and multiple shapes



Brand : BUVAuncom	Model : BV-4020C-15KW
Laser Power	1kw~15kw
Laser Wavelength	1070nm
Positioning accuracy	±0.03mm/m
Repeat positioning accuracy	±0.02mm
Power Supply	380V/50HZ
Operating temperature of machine	0°C-40°C
Other machine size options	3000x1500mm / 4000x1500mm / 6000x1500mm

Welding robot

Laser autogenous welding

Laser wire filling welding

Laser-arc hybrid welding

Highly automated

The welding quality is stable.

It is suitable for complex workpieces.

PRODUCT DESCRIPTION

It has 6 joints, with payloads of 15kg/25kg/35kg and arm lengths of 1400mm/1800mm/2000mm.

Controller technology: It uses an open - type controller, which can communicate with various laser welding equipment.

Repeat positioning accuracy: ± 0.03 mm to ± 0.05 mm, meeting the requirements of precise laser welding.

Protection level: IP67, suitable for harsh industrial environments.

Brand:BUVAuncom	Model:BV-R12-1400/1800/2000
Type	Articulated Type
Controlled Axes	6 Axes
Repeatability	± 0.03 mm~ ± 0.05 mm
Drive Method	Electric servo drive by AC servo motor
Installation	Floor, Upside-down, Wall mount

PRODUCT APPLICATION

- 1 Applicable scenarios :

Laser tailor-welding of vehicle body skins, battery structures, laser sealing of high-speed train doors, air-tight cylinder structures, high-temperature and high-pressure intake and exhaust systems, large-scale stainless-steel water-cooling structures, corrosion-resistant and high-strength sealing structures, bullet-proof armored structural components, graphite - pressing structures of the fourth-generation nuclear reactors, etc.
- 2 Applicable industries:

Automobile manufacturing industry, aerospace industry, electronics industry,



Handheld Air-cooled Fiber Laser Welding Machine



- Flexible
- Safe
- Efficient
- Maintenance-free

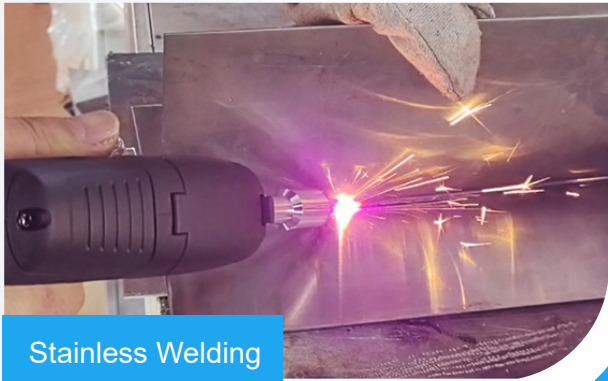
PRODUCT DESCRIPTION

The machine is composed of advanced fiber laser, handheld precision laser welding head, and high-efficiency air cooling integrated cabinet, which is flexible, safe, efficient, as well as maintenance free, and widely used in various welding processes.

Brand:BUVAuncom	Model:BV-AW750/1200/1500/2000
Laser output power	750W/1200W/1500W/2000W
Operating mode	Continuous / Modulated
Working temperature	10~45°C
Working voltage	AC220V 50Hz/60Hz
Gross Power	4.5kW

PRODUCT APPLICATION

- Suitable Materials :**
Carbon steel, stainless steel, high strength steel, aluminum, copper, alloys.
- Applications:**
Sheet metal, mold, chassis, water tank, kitchen & bathroom products, hardware lighting, billboards, door & window frames, household appliances, auto parts.



Stainless Welding

Welding Effect



Galvanized Welding

Welding Effect

WELDING

Handheld Water-cooled Fiber Laser Welding Machine

User-Friendly Operation

Superior Welding Quality

High-Performance

Automated Processing



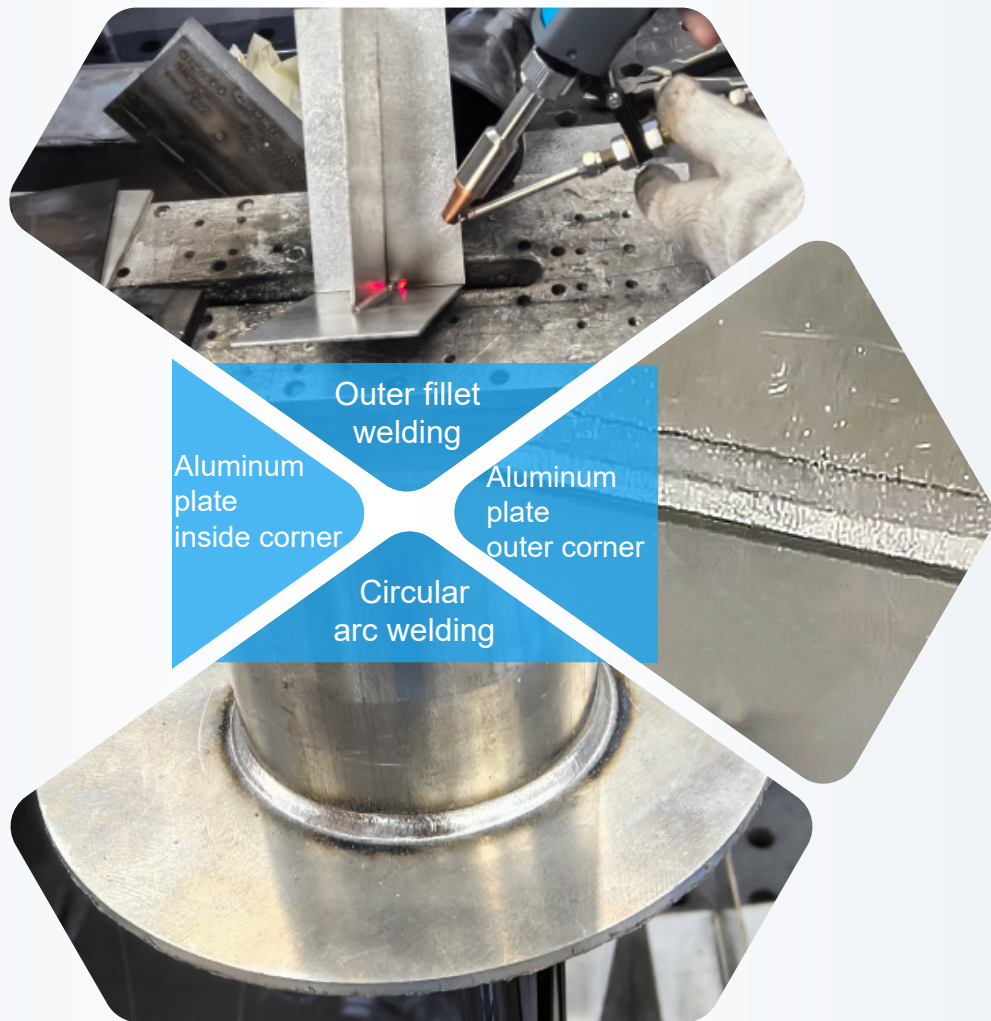
PRODUCT DESCRIPTION

This machine uses advanced fiber laser, handheld welding head, and water cooling technology, for integrated welding, non-contact cleaning, weld cleaning and cutting. With its protection alarm and active safety shutdown function, it is safe, stable, flexible and efficient, widely used in metal processing.

Brand:BUVAuncom	Model:BV-WW1200/1500/2000/3000
Working voltage	AC220V 50Hz/60Hz
Laser power	1200W/1500W/2000W/3000W optional
Fiber length	10m or customized
Working temperature and humidity	10~40°C;30-70% No condensation

PRODUCT APPLICATION

- 1 Versatile Welding Functions**
Spot, seam, over, sealing, fillet, inner & outer angle welding.
- 2 Metal Compatibility**
For carbon, stainless, high-strength steel, aluminum, copper, alloys.
- 3 Industry Reach**
In sheet metal, mold, chassis, diverse product sectors



Outer fillet welding

Aluminum plate inside corner

Aluminum plate outer corner

Circular arc welding

Multi-axis Fiber Laser Automatic Precision Welding Machine

PRODUCT DESCRIPTION

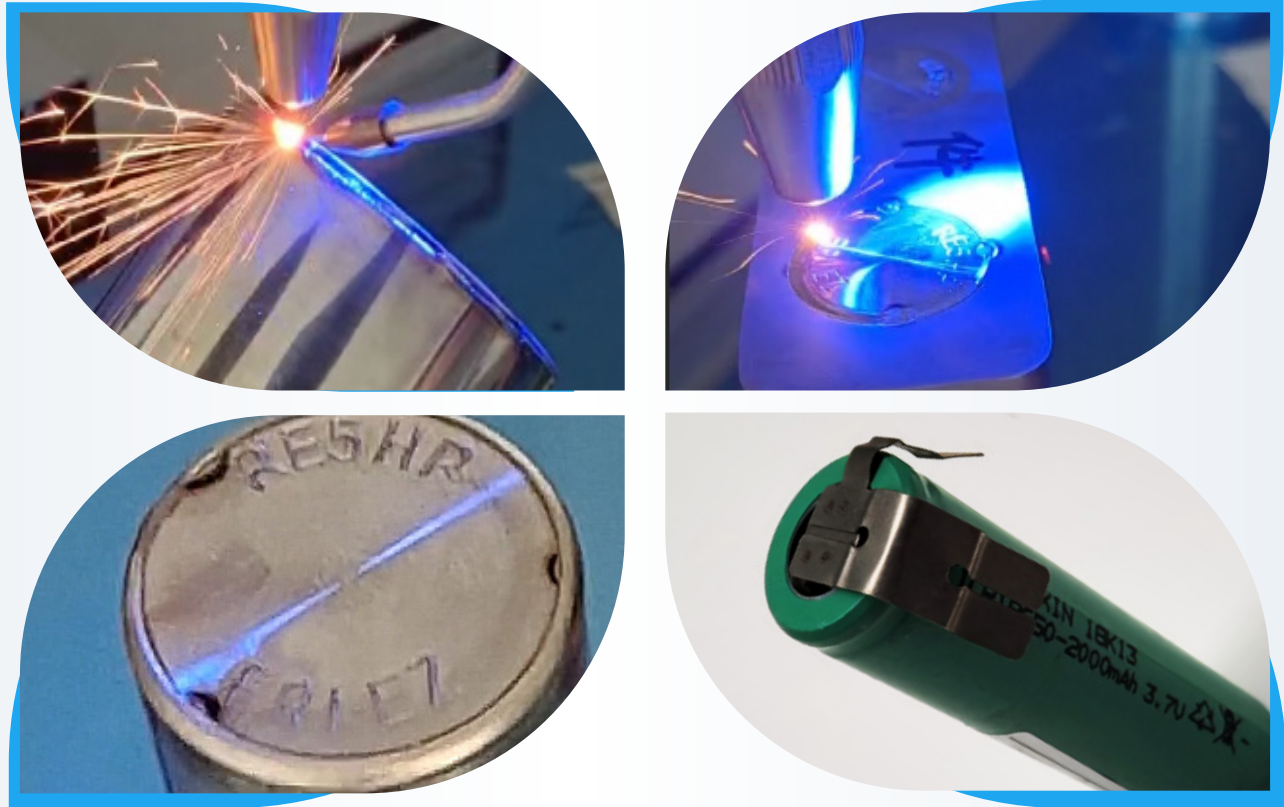
The machine adopts high-performance fiber laser, high-precision servo motor and multi-axis linkage control system to realize the automatic welding of high-precision metal workpiece with complex trajectory.



Brand:BUVAuncom	Model : BV-MAW1500/2000/3000/6000
Working voltage	AC220V 50Hz/60Hz
Laser power	1500W/2000W/3000W/6000W
Orientation method	IR locating、 CCD Inspection
Supported vector file format	Dwg、 Dfx、 Bmp、 Jpg、 Png、 Tif、 Pcx、 Tag、 Gif、 Plt
Module stroke X/Y/Z Axis (C/A Axis Optional) (mm)	500*300*400 customized

PRODUCT APPLICATION

- 1 **High-Tech Industry Welding**
For aerospace and automotive manufacturing's critical welds.
- 2 **Daily Product Welding**
Applied in home appliances, electronics, and hardware.
- 3 **Precision Goods Welding**
Ideal for medical equipment, watches, jewelry, and new energy batteries.



Backpack Portable Pulse Laser Cleaning Machine

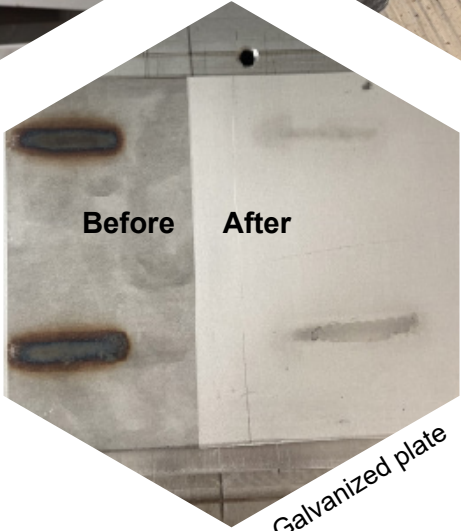
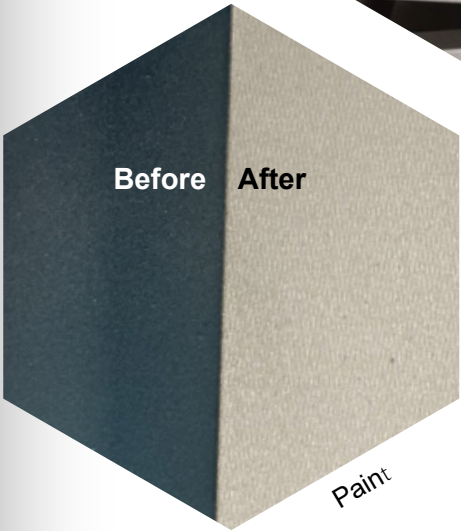
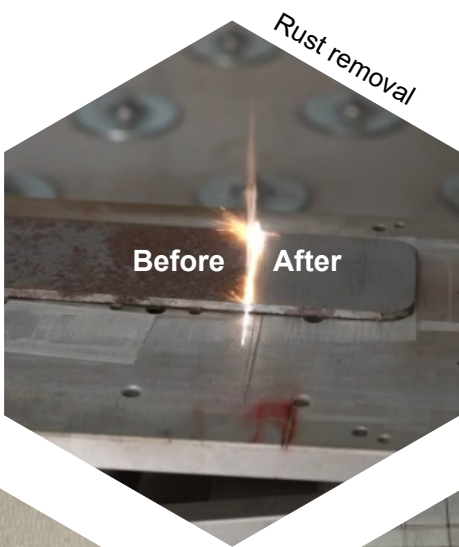
PRODUCT DESCRIPTION

The machine uses high-energy laser beam to illuminate the surface, make the surface corrosion and coating instantaneous evaporation or stripping. High efficiency, low energy consumption, low noise, low pollution, stable system, almost no maintenance, support for 16 languages.



PRODUCT APPLICATION

- 1 Warranty Terms**
One-year free service (excluding specific damages).
- 2 Technical Support**
Free tech consultation, advice, and software upgrades; Long-term and extensive hardware and software support.
- 3 Maintenance Commitment**
Lifelong service with only parts charged.



Brand:BUVAuncom	Model : BV-PR50B/100B/200B/300B
Laser power	50W/100W/200W/300W optional
Working temperature and humidity	5°C~40°C;≤80% No condensation
Fiber length(m)	1.5m
Control method	Wireless control screen
Working voltage	Dedicated 220V power supply adapter (output DC48V) The optional battery 200W works continuously for 80 minutes

Portable Pulse Laser Cleaning Machine

Precise cleaning

Eco-Friendly

User-Friendly

Ergonomic & Efficient



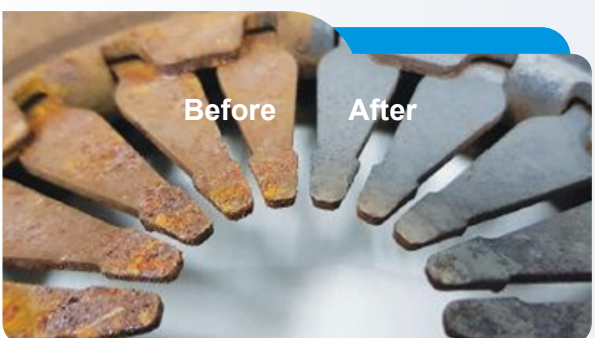
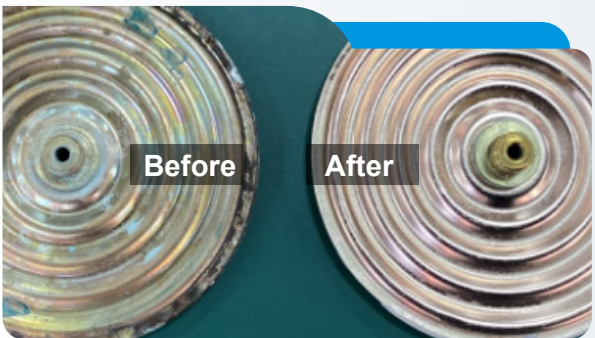
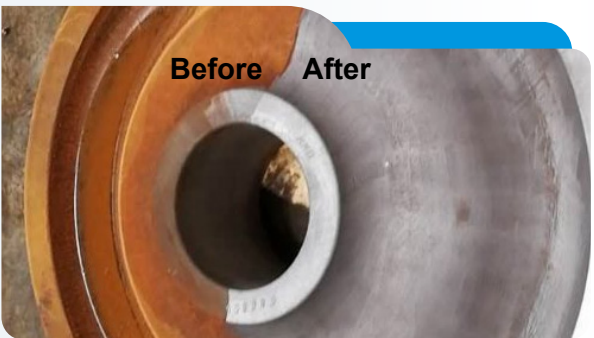
PRODUCT DESCRIPTION

This machine adopts pull-portable design, low energy consumption, low noise, low pollution, stable system, almost no maintenance, support for 16 languages.

Brand:BUVAuncom	Model : BV-PR100/200/300/500
Working voltage	AC220V 50Hz/60Hz
Laser power(W)	100W/200W/300W/500W optional
Working env. temp. range	5°C~40°C/≤80%
Laser output mode	Pulse mode
Scanning width(mm)	0-100 / 0-145 optional
	Continuously adjustable, biaxis supports 9 scanning modes

PRODUCT APPLICATION

- 1 Applicable Surface Treatments**
Resin, paint, oil, corrosion, coating, oxide removal.
- 2 Industry Applications**
Ships, auto repair, molds, etc.
- 3 Warranty Details**
1-year free (except certain damages).
- 4 Service Offerings**
Lifetime maintenance (parts only), tech support.



Handheld Water-cooled Fiber Laser Cleaning Machine



PRODUCT DESCRIPTION

The equipment adopts advanced continuous fiber laser technology, laser optical system and control system. With the characteristics of no wear, no contact, it can be used not only to clean organic pollution, can also be used to clean inorganic matter. The application scope includes: rust removal, paint removal, oil removal, cultural relic restoration, glue removal, etc.

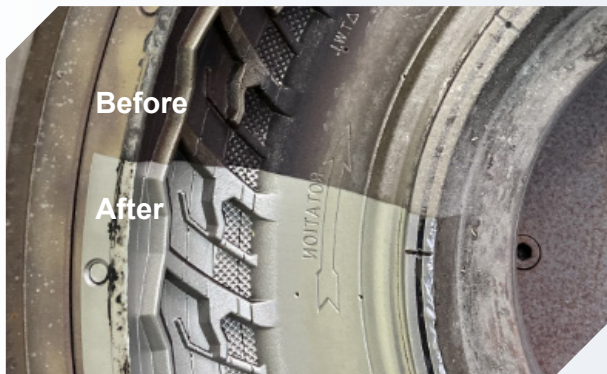
Brand:BUVAuncom	Model : BV-CR1200/1500/2000/3000
Working voltage	AC220V 50Hz/60Hz
Laser power	1200W/1500W/2000W/3000W optional
Laser output mode	Continuous or modulate
Fiber length	10m or customized
Working temperature and humidity	10~40°C;30-70% No condensation
Scan Width-Cleaning	0~150mm/F400(0~225mm/F600;0~300m m/F800 optional

PRODUCT APPLICATION

- 1 Metal Surface Restoration**
Rust removal and paint treatment.
- 2 Surface Cleaning Tasks**
Oil, stain, dirt, coating removal.
- 3 Welding & Spray Prep**
Pretreatment for welding and spray surfaces.
- 4 Stone & Rubber Care**
Stone surface cleaning and rubber mold residue removal.



Ship derusting



Tire cleaning



Metal surface



Automobile

Fiber Laser Marking Machine

PRODUCT DESCRIPTION

As one of the advanced laser marking equipments, this machine uses advanced third generation solid fiber lader: good beam quality, uniform and fine lines, fast marking speed, compatible with AI, DXF,BMP,DWG,DXP and other graphic formats.



PRODUCT APPLICATION

- 1 **High-Precision Tech Marking Domain**
Ideal for electronics, chips, precision parts, and hardware tools.
- 2 **Fine Branding for Luxury & Daily Items**
Suited for jewelry, gifts, sanitary ware, and food & beverage labels.
- 3 **Seamless Production Line Marking Integration**
Connects effortlessly to enable automated marking in the production line.



Brand:BUVAuncom	Model : BV-FM20T/30T/50T/70T/100T
Working voltage	AC220V 50Hz/60Hz
Laser power	20W/30W/50W/70W/100W
Repeat frequency	20KHz-100KHz Continuous adjustable
Min line width	0.012mm
Marking range(mm)	110*110/150*150/200*200 Optional
Supported vector File Format	DWG、DFX、BMP、JPG、PNG、TIF、PCX、TAG、GIF、PLT

Portable Fiber Laser Marking Machine

Portability

High-speed

Accurate

Wide application



PRODUCT DESCRIPTION

This machine adopts advanced laser technology, highly integrated design, small and light body, equipped with 8-core processor and color touch LCD screen control system, allowing fast focus and high marking accuracy. Can be used for a variety of metal and partial non-metal trademark marks, bar code marks and personalized graphic markers.

Brand : BUVAuncom	Model : BV-FM20H/30H/50H
Working voltage	AC220V 50Hz/60Hz or Li-battery optional
Marking range	100x100mm,150x150mm,175x175mm optional
Line width	0.03mm
Repeat location accuracy	0.01mm
Laser power	20W/30W/50W optional
Location mode	IR locating, focusing

PRODUCT APPLICATION

- 1

Diverse Industry Coverage

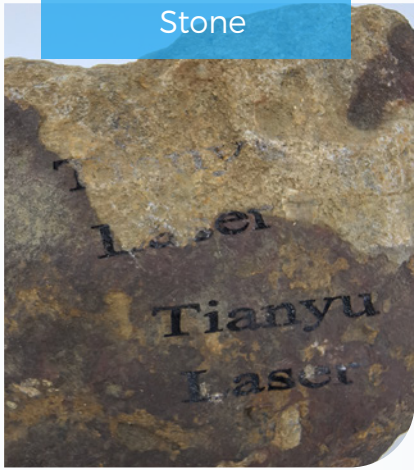
Medical, electronics, food, plastics, and more.
- 2

Metal Material Compatibility

Gold, silver, copper, steel processing.
- 3

Non-Metal Material Adaptability

Paper, plastic, glass handling.



BUVA Technology Corporation

OUR SPIRIT :

If you win, you toast to each other,
if you lose, you fight to save

Adress : Wuhan, Hubei, China

Call us : +86 13098839972

Whatsapp : +86 13098839972

Email : sales@buvatech.com

Website : <https://www.buvatech.com>



Our service :

Dedicated Service for All : Current Hubs &

Future Expansion

Fast Service Pledge : LA & Calgary

Bases, Global Aspirations

Tailored Service Delivery : From LA &

Calgary to the Globe

Customer-Centric Service : US &

Canada , Ukraine, Roots, Global

Branches,

Efficient Service Network : LA &

Calgary Nodes, Worldwide Growth

Unique Service Assurance : Operating in LA

& Calgary, Expanding Globally